



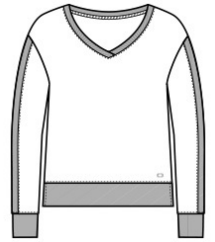
# OGIO® Ladies Luuma Flex Long Sleeve V-Neck LOG825

Cozy but refined, this OGIO look is elevated enough for the office but also perfect for travel.

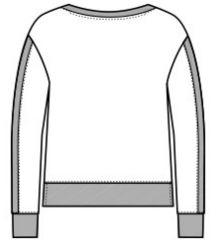
- 7.1-ounce, 57/38/5 modal/poly/spandex French terry
- OGIO heat transfer label for tag-free comfort
- Rib knit bound collar, cuffs and hem
- Piped rib sleeve details
- Side slits
- Iridescent heat transfer O on front left hem

### CARE INSTRUCTIONS

Machine Wash Cold With Like Colors. Do Not Use Fabric Softener. Only Non-Chlorine Bleach When Needed. Tumble Dry Low. Remove Promptly. Cool Iron If Necessary.



front



back

### HOW TO MEASURE



#### BUST

Measure under the arm and around the fullest part of the bust with arms down, keeping tape horizontal.

### SIZE CHART

	XS	S	M	L	XL	2XL	3XL	4XL
Size	2	4/6	8/10	12/14	16/18	20/22	24/26	28/30
Bust	32-34	35-36	37-38	39-41	42-44	45-47	48-51	52-55

### COLOR INFORMATION



Blacktop  
PMS BLACK C



Ivory Snow



Petrol Grey  
Heather  
PMS COOL GREY  
10C